

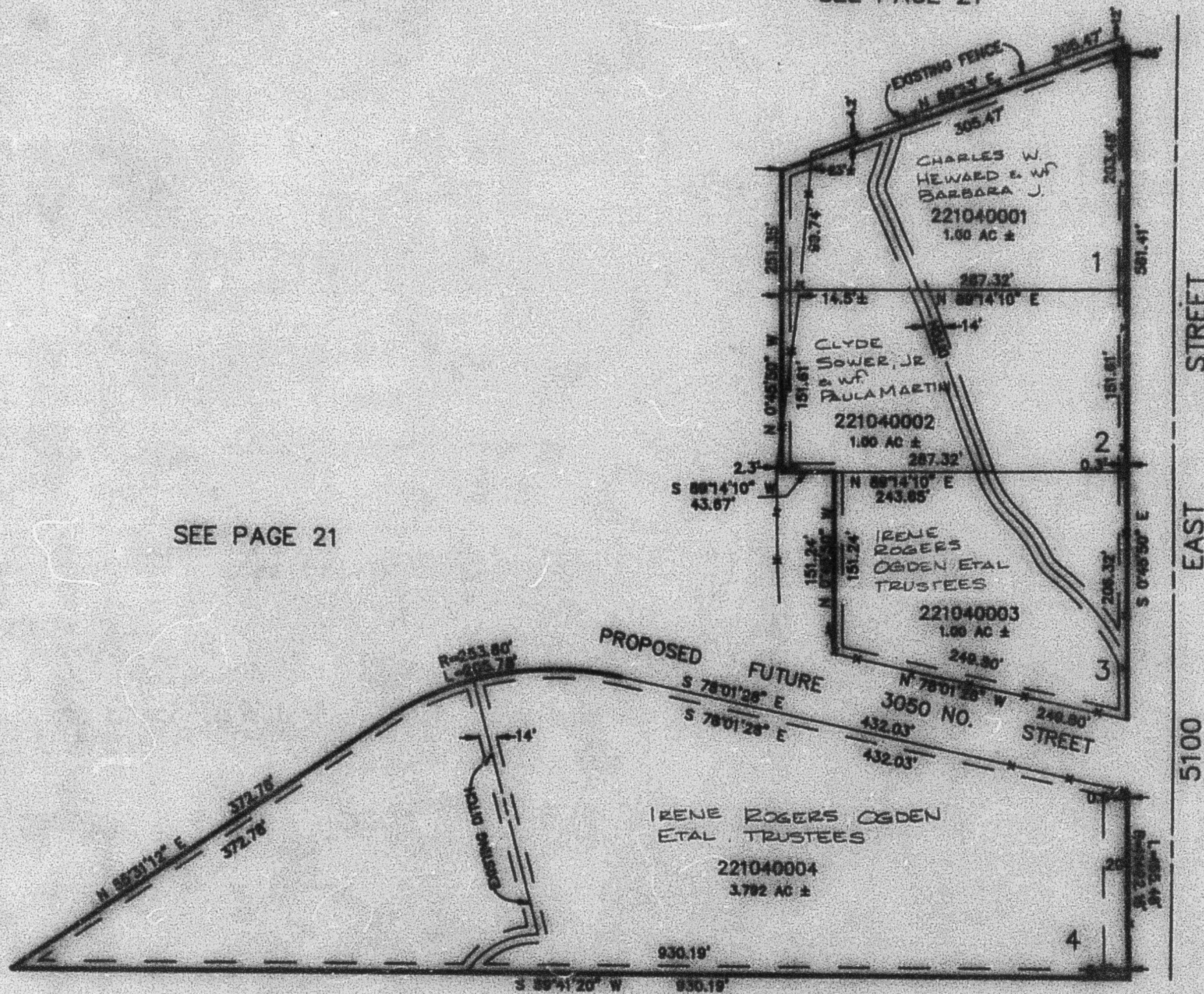
PART OF THE W.1/2, SEC. 27, T.7N., R.1E., S.L.B. & M.  
**IRENE OGDEN SUBDIVISION NO. 1**

IN WEBER COUNTY  
 SCALE 1" = 100'

104

TAXING UNIT: 102

SEE PAGE 21



SEE PAGE 21

SEE PAGE 21

SEE PAGE 21

7' UTILITY & DRAINAGE EASEMENTS EACH  
 SIDE OF PROPERTY LINES AS INDICATED  
 BY DASHED LINES EXCEPT AS OTHERWISE  
 SHOWN.

FOR COMPLETE ENG DATA SEE  
 ORIGINAL DEDICATION PLAT IN  
 BOOK 31, PAGE 44 OF RECORDS.